

Link Tubular

Motor 35mm (for Atlantis[®] & BCS[®])



Forest Link RF
Protocol inside

TABLE OF CONTENTS

- Included in the box
- Accessories
- Features & Benefits
- Declaration Of Conformity

1. Your Link Tubular Motor

- Introduction
- Areas of use
- Important safety and liability information

2. Product Info

- Product Info

3. Instructions

- Control functions

4. Get started

- Tubular motor pairing button functions
- Pairing motor with Forest Easytouch remote control

5. Settings

- Direction reverse
- Upper & lower limits settings
- Setting up the favourite function
- Adjusting upper & lower limits
- Adjusting motor speed
- Unpair remote controls
- Cancelling limits

6. Support

- FAQ
- Technical specification

7. Notice

- Recycling

INCLUDED IN THE BOX

- 1x Link Tubular Motor (3416700117)
- 1x Crown and drive adapter for BCS system
- 1x Manual

ACCESSORIES (NOT INCLUDED IN BOX)

- Forest EasyTouch Remote Control (520108X006)

FEATURES & BENEFITS

- Wireless RF operated
- Weight load:
 - BCS - 11kg
 - Atlantis 50mm - 12kg
 - Atlantis 60mm - 10kg
- 5 Year warranty on motor
- Adjustable speed 15/20/25 rpm

DECLARATION OF CONFORMITY

FOREST
DRAPERY HARDWARE

EU Declaration of Conformity

Hereby we, the undersigned:

Manufacturer:	Forest Group Nederland B.V.
Address: city, Country:	Touwenweg 42, 7418 AM Deventer, The Netherlands
Telephone number:	+31 0570 622 850

Declare that this DoC is issued under our sole responsibility and that this product is:

Product description:	Tube motor
Type designation(s):	3416700117
Trademark:	Forest

Object of the declaration:



The object is in conformity with the relevant Union harmonization legislation:

Radio Equipment Directive – 2014/53/EU	
Article 3.1(a)	Article 3.2
EN IEC 60335-2-87:2023 + A1:2023 + A11:2023	ETSI EN 300 220-1 V3.1.1 (2017-02)
EN 60335-1:2019 + A11:2014	ETSI EN 300 220-2 V3.1.1 (2017-02)
A13:2017 + A1:2019 + A14:2019 + A2:2019 + A15:2021 + A16:2023	
EN 50563:2017	
Article 3.1(b)	
EN 301 488-1 V2.2.3 (2019-11) / EN 301 488-3 V2.3.2 (2023-01)	
EN 55014-1:2017 + A11:2020 / EN 55014-2:1997 + A2:2006	
EN IEC 61000-3-2:2019 + A2:2024 / EN 61000-3-3:2013 + A2:2021	
RoHS directive – 2011/65/EU + amendment (EU) 2015/863	

Signed for and on behalf of:

Place: Deventer	Name: A.G. ten Have
Date: 17-03-2025	Function: Head R&D

Signature: 



Forest Link RF
Protocol inside

SUPPORTED PROTOCOL

This Link Tubular 35mm Motor is equipped with the Forest Link® protocol.

1. Your Link Tubular 35mm Motor

INTRODUCTION

Thank you for choosing the Forest Link Tubular 35mm motor.

This guide provides essential information on how to operate, maintain, and maximise the performance of your Forest Link Tubular 35mm motor.

In this manual, you'll find step-by-step instructions for usage and troubleshooting, as well as tips to ensure safe and efficient operation.

AREAS OF USE

The Forest Link Tubular Link motor 35 mm is designed for use with the Forest Roman Blind System (BCS[®]) and the Forest Roller Blind System (Atlantis[®])

EN

IMPORTANT SAFETY AND LIABILITY INFORMATION

To ensure safe and proper operation of the Link 35mm Tubular motor, please follow the instructions in this document as well as the complete manual.

Keep this document close to the product at all times or visit www.forestgroup.com to view it online. Use the product only as intended.

This product is not suitable for use in humid spaces such as bathrooms or outdoors. In order for the Link 35mm Tubular motor to function correct and safe, the complete window covering system must be assembled with original & undamaged parts and devices of Forest Group (Nederland) B.V.

This product is not suitable for use by children, it is not a toy. Keep (as well the remote control) out of the reach of children at all times. Frequently examine the product for imbalance and signs of wear or damage.

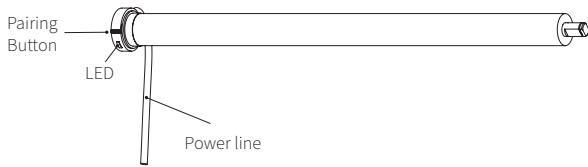
Forest Group does not assume liability for resulting damages to persons, animals and/or property, defects, labour on location, service calls, reinstallation or expenses involved shipping, packing or returning goods, if the product has been abused/modified in any way

or damaged by improper use or failure to observe these operating instructions. In such situation, the right to any form of warranty, service and reimbursement of expenses shall cease.

1. This product is for indoor use only, do not use outdoor or in humid environments.
2. Power supply: 230Vac
3. The motor will jog during setup, please do not proceed to the next step until jog complete.
4. During setup, if no buttons are pressed for 10 seconds, the motor will exit the setting mode.
5. The motor can be paired with max 10 controllers.
6. Upper & Lower limits cannot be set at the same position, limits saved even power off.
7. The motor runs constantly for at 6 minutes max without any other operation.
8. Do not lift the motor by grabbing and pulling the power wire or the antenna.

2. Product info

PRODUCT INFO



3. Instructions

CONTROL FUNCTIONS

To operate the tubular motor, you need a Forest remote control with the Link protocol (EasyTouch line).

Button		Description/ function
	Open	Opens the curtains or blinds
	Close	Closes the curtains or blinds
	Stop	Stops the movement
	Channel +	Switches to the next channel. The LED indicator moves to the right
	Channel -	Switches to the previous channel. The LED indicator moves to the left
	Favourite	Allows users to quickly access their preferred curtain positions with a single press
	Prg	The Program button, enables users to access programming functions

Note: The P button is located inside the back of the remote control. The method to open the remote may vary depending on the model. Please refer to the specific instructions for your remote type.

4. Get started

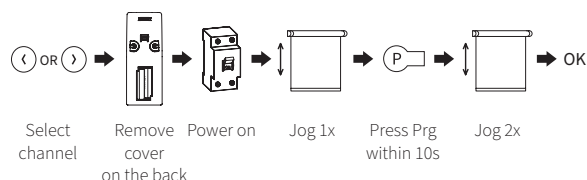
TUBULAR MOTOR PAIRING BUTTON FUNCTIONS

Functions	Paring button	Jogging time	Note
OPEN/STOP/CLOSE	Short press	/	Can only be used when limits are already set.
Adding/Removing Controller	Hold for 2s	Jog 1x	Press the P button on the remote control within 10 seconds.
Deactivate RF control	Hold for 6s	Jog 2x	Hold Pairing button for 6s, motor jogs twice to show the motor RF controle is deactivated. To activate again: hold Pairing button for 2s.
Direction Reverse	Hold for 10s	Jog 3x	All other settings remain the same
Reset*	Hold for 16s	Jog 4x	Delete all settings

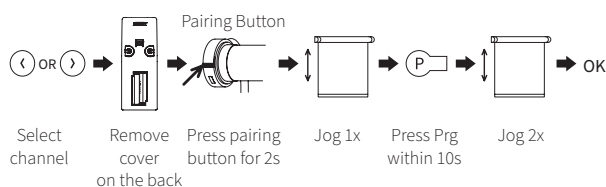
**Important: Be sure to reset the end positions before using the motor to prevent damage to both the fabric and the motor.*

PAIRING MOTOR WITH FOREST EASYTOUCH REMOTE CONTROL

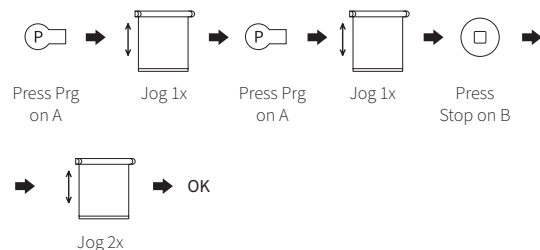
1: Pairing procedure after assembly



2: Pairing procedure before assembly



3: Add a new remote using an existing remote (unassembled systems)



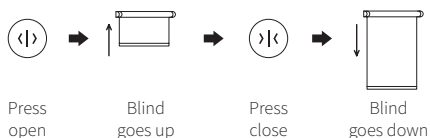
Note: Pairing can not be done under group channel or 0 channel.

EN

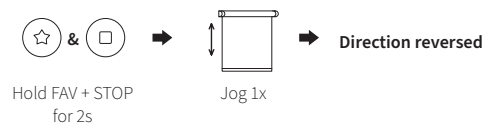
5. Settings

DIRECTION REVERSE

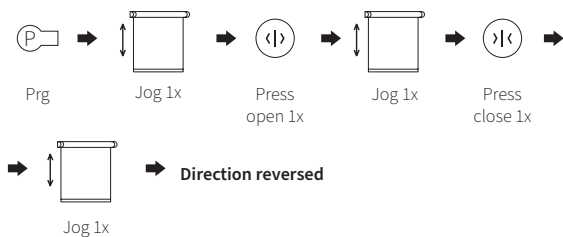
The blind moves in the right direction.



If the limits are not set, and direction goes opposite.

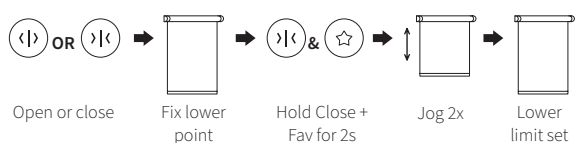


If limits are set and direction goes opposite.



Note: Do reverse the direction when it goes opposite.

UPPER & LOWER LIMITS SETTINGS



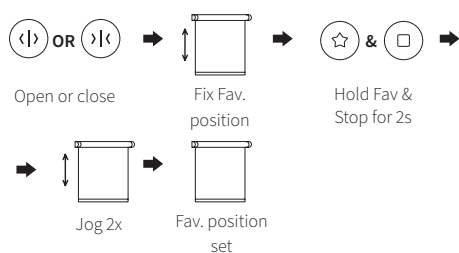
*Note: Upper&Lower limits cannot be set at the same point.
As long as the end positions have not yet been set, the motor operates in step-by-step mode: The motor moves as long as you hold down the Open or Close button, and stops as soon as you release it.*

Tip: If you hold the Open or Close button for 2 seconds, the curtain will continue to move in one continuous motion until you press Stop.

*Once the end positions have been set, the motor will automatically operate in one-touch mode.
A single press of Open or Close will activate a continuous movement.*

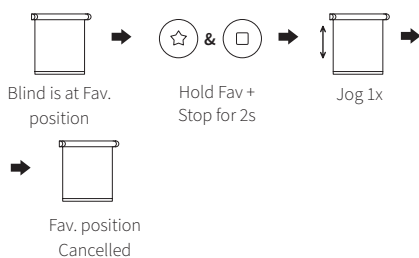
SETTING UP THE FAVOURITE FUNCTION

Setting



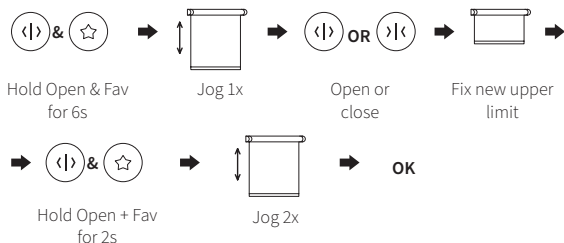
Important: The Favourites function can only be set if the end positions are configured.

Cancelling Favourite Function

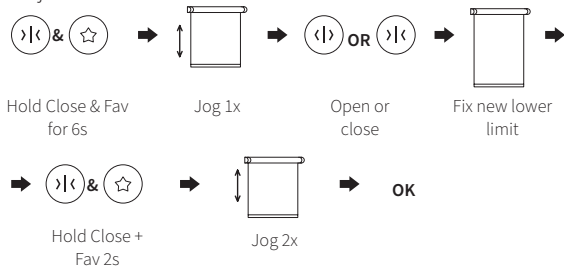


ADJUSTING UPPER & LOWER LIMITS

Adjust Upper limit



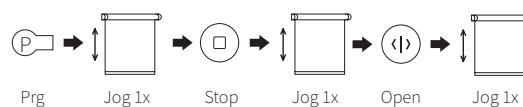
Adjust Lower limit



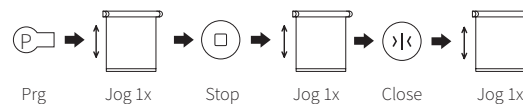
Note: The operation should be done within 4mins.

ADJUSTING MOTOR SPEED

speed increase:



speed decrease:

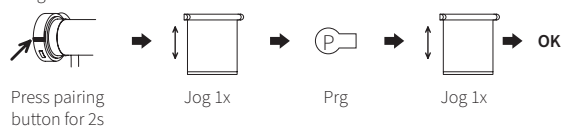


Note: If motor doesn't jog, the max/min speed has already been reached. There are 3 speeds adjustable.

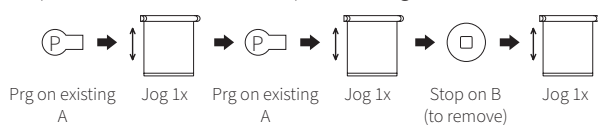
UNPAIR REMOTE CONTROLS

Unpair a single remote control

Pairing Button motor

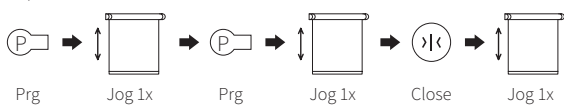


Unpair remote control B via pre-existing remote control A



➡ Remote control B unpaired

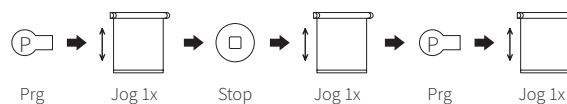
Unpair all remote controls



➡ All remote controls unpaired

Note: All other settings, except paired remote controls, remain the same.

CANCELLING LIMITS



➡ Limits cancelled

Important: Make sure to reset the end positions before using the motor to prevent damage to both the fabric and the motor.

EN

6. Support & Technical specification

FAQ

Why isn't the motor working?

- Check if you have paired a remote control. If your remote is not paired yet you need to pair the remote control with the motor by following the pairing instructions in this manual.
- Check if the RF control is active. If the RF control is inactive, you can reactivate it by pressing the motor button for 2 seconds to activate the RF control.

Why does the motor stop suddenly during operation?

- Check if the upper and lower limits are set correctly. If not, re-set the upper and lower limits according to the instructions in your manual.
- Check if the fabric doesn't exceed the rated load. In that case, reduce the load on the motor by adjusting the fabric and checking whether it falls within the specified weight limits.

Why does the motor only move in one direction?

- Check if the motor's limits are set correctly. If they are incorrect, then cancel the original limits and set new upper and lower limits following the instructions in this manual.

TECHNICAL SPECIFICATION

• Voltage	220-240Vac
• Power max.	50Hz – 60W
• Current max.	0.3A
• Torque	5 Nm
• Speed	15 / 20 / 25
• Run time max.	6 minutes
• Length	60cm
• Diameter	35mm
• Frequency	433.92MHz
• RF range (max.)	30m
• Protection degree	IP20
• Temperature	0 - 40°C
• Weight load BCS	11 kg
• Weight load Atlantis 50mm	12 kg
• Weight load Atlantis 60mm	10 kg

EN

The images in this document are not binding.

SCAN FOR
DIGITAL MANUAL



www.forestgroup.com/en/downloads/technical-documents

7. Notice



RECYCLING

Do not dispose of the product with household waste. Ensure that you return it to a collection point or depot for recycling purposes.